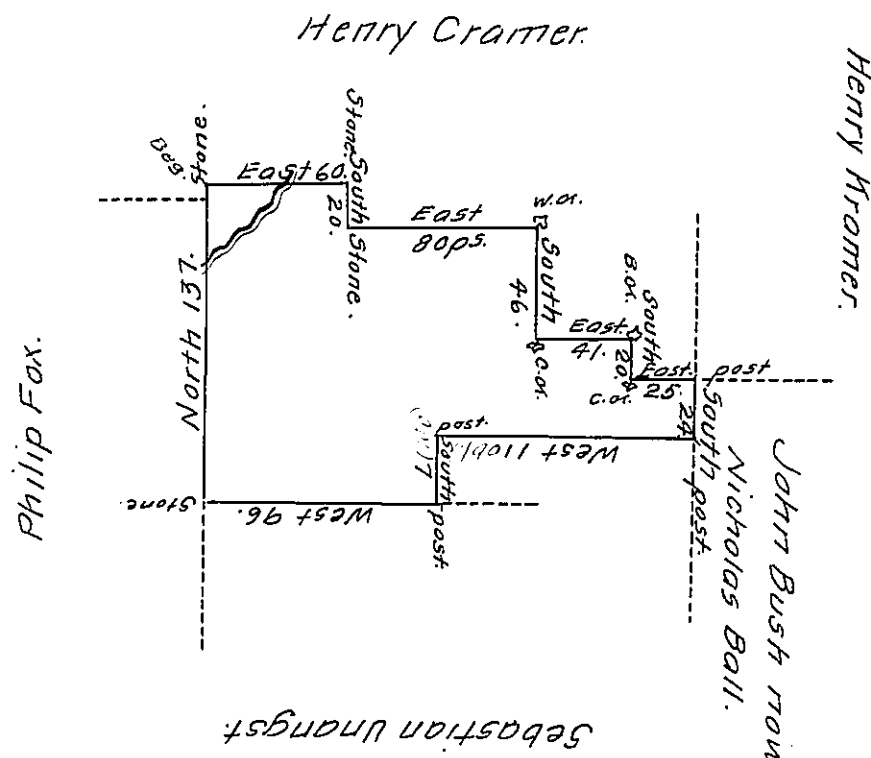


Pg 49



A Draught of Conrad Fox's Land being part of an Appropriated Tract of the Honourable Thomas Penn's Containing One hundred and ten Acres and one hundred and thirty two perches with the Allowance of Six $\frac{1}{2}$ Cent & Co^{rs} Surveyed by Jame Scull Deceased Sometime in ye year 1764 and Resurveyed the 6th day of October, 1778.

$\frac{1}{2}$ Geo. Palmer, D.S.

Situate on Manackony Creek in Bethlehem.

Township Northampton County. G.P.

IN TESTIMONY that the above is a copy of the original remaining on file in the Department of Internal Affairs of Pennsylvania, made conformably to an Act of Assembly approved the 16th day of February, 1833, I have hereunto set my Hand and caused the Seal of said Department to be affixed at Harrisburg, this seventeenth day of May, 1910.

Henry Howells
 Secretary of Internal Affairs.